

Sample Affiliate

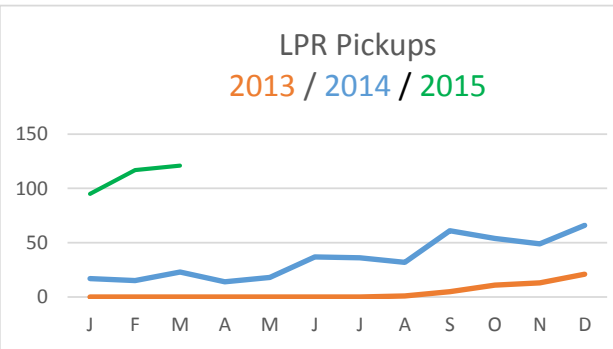
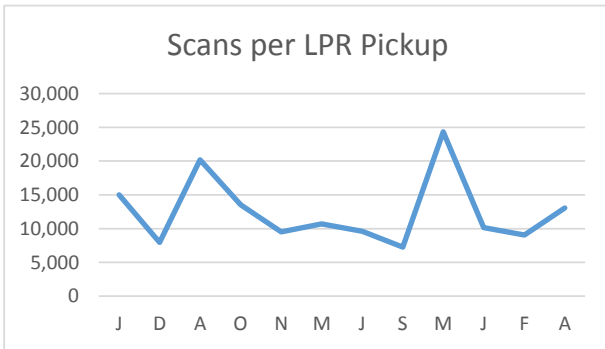
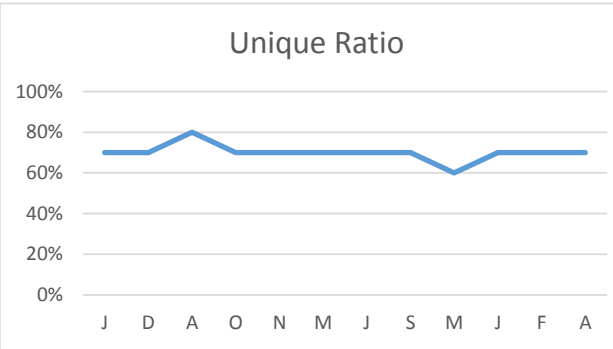
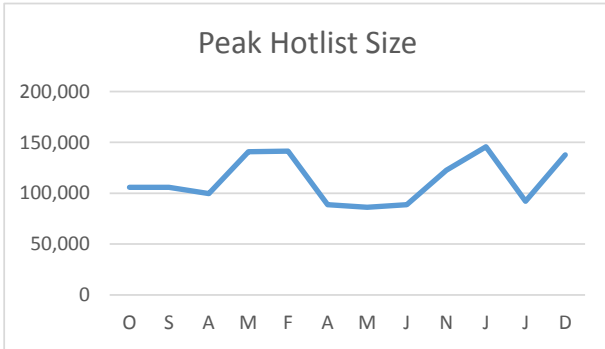
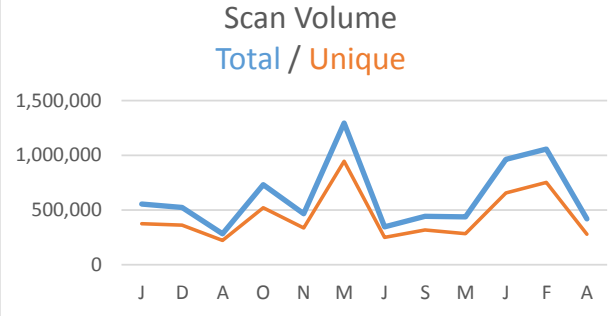
Monthly Statement



DATA ACQUISITION & HOTLIST

2015-03-01

Total Scans	1,284,541
Unique Scans	955,555
Unique Ratio	74.4%
Peak LPR Hotlist Size	150,000
LPR Pickups	121
Scans per LPR Pickup	11,719



Sample Affiliate

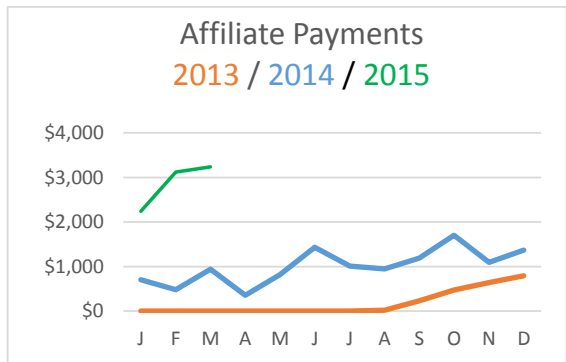
Monthly Statement



AFFILIATE PAYMENTS

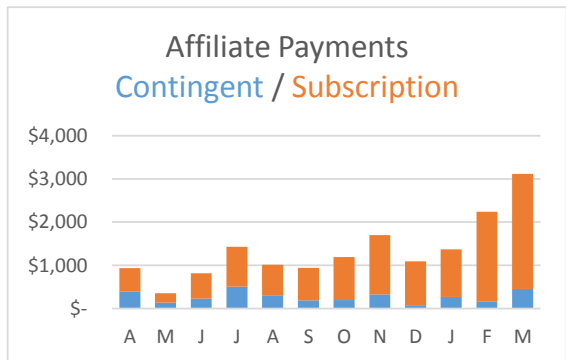
OVERALL

Order Type	2015-03-01	% of Total
Contingent	\$ 350.61	10.8%
Subscription	\$ 2,899.16	89.2%
Total	\$ 3,249.77	100.0%



CONTINGENT

	2015-03-01
# of Transactions	9
Average Locate Fee	\$ 241.07
Average Revenue Share %	20%
Subtotal Contingent Revenue Share	\$ 350.61
Less: Refunds	\$ -
Total Contingent Revenue Share	\$ 350.61



SUBSCRIPTION

	2015-03-01	% of Total
Historical Hit Revenue	\$ 870.55	29.2%
LPR Pickup Revenue	\$ 2,111.55	70.8%
Total Subscription Revenue Share	\$ 2,982.10	100.0%
Revenue Share %	20%	
LPR Pickup %	1.69%	

